

Cambridge  
International  
AS & A Level

**Cambridge International Examinations**  
Cambridge International Advanced Subsidiary and Advanced Level

---

**GEOGRAPHY**

**9696/32**

Paper 3 Advanced Human Options

**October/November 2017**

INSERT

**1 hour 30 minutes**

---

**READ THESE INSTRUCTIONS FIRST**

This Insert contains all the Figures referred to in the questions.



---

This document consists of **5** printed pages and **3** blank pages.

Fig. 1 for Question 1

Artificial (inorganic) fertiliser use and rice yield in Indonesia, an LEDC/NIC in Asia,  
1970–2010

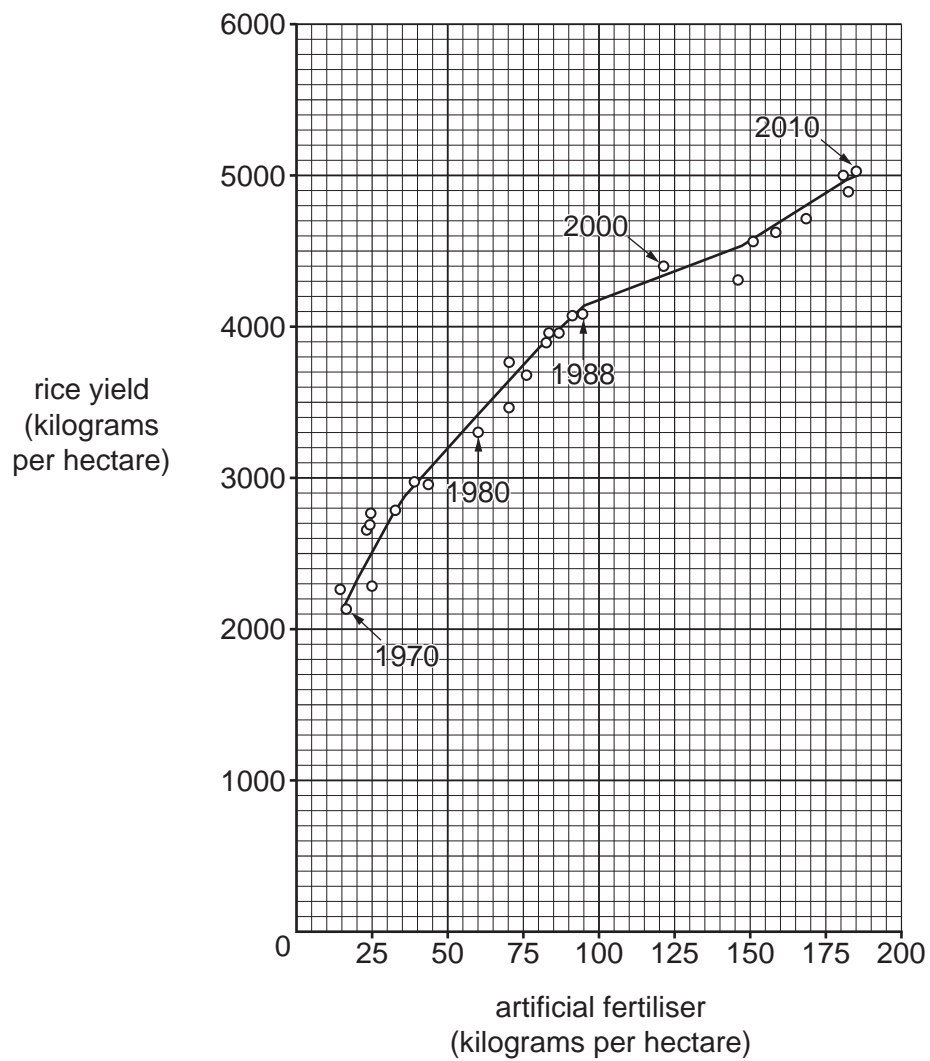


Fig. 2 for Question 4

Estimated percentage emissions of sulfur dioxide ( $\text{SO}_2$ ) and nitrogen oxides ( $\text{NO}_x$ ),  
in one year, by source, in an MEDC

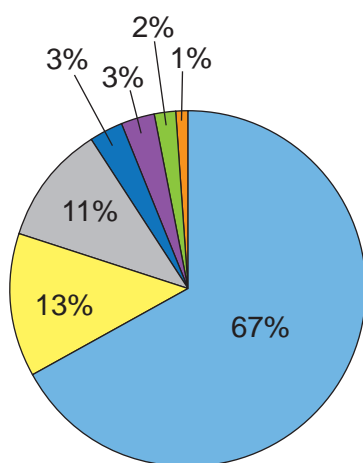


Fig. 2A

Sulfur dioxide

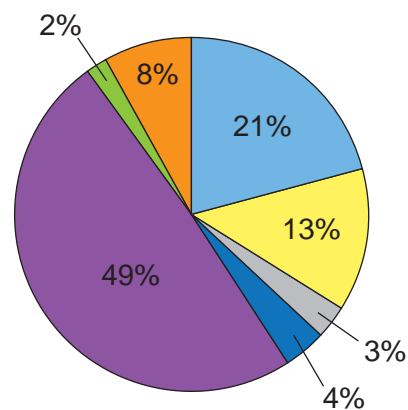


Fig. 2B

Nitrogen oxides

**Key**

- power generation
- industry
- oil refining
- domestic
- transport
- agriculture
- other

Fig. 3 for Question 6

One cartoonist's view of the hidden environmental impacts of cruise tourism

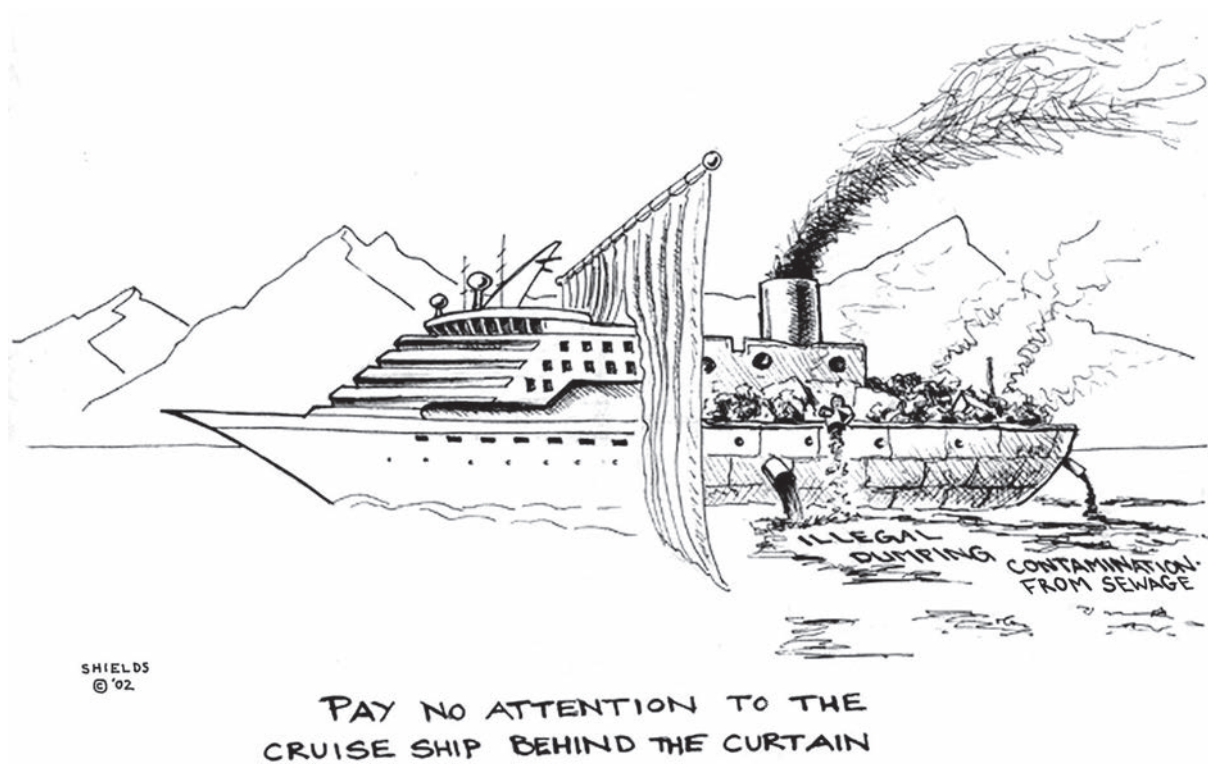
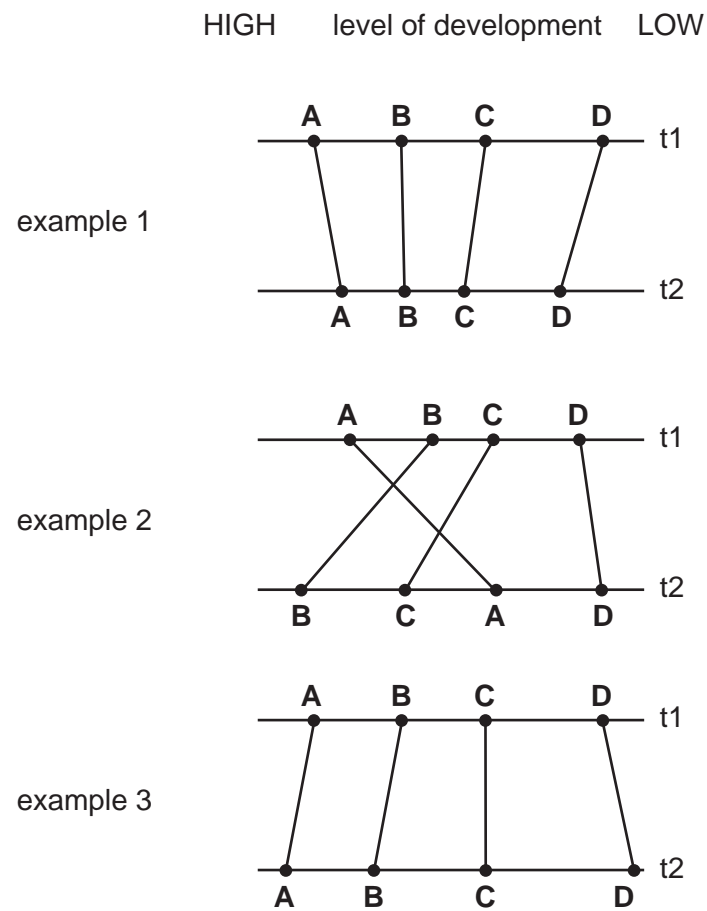


Fig. 4 for Question 8

Changes over time in the relative development of regions in a four region system



**Key**

t      time  
**ABCD**      regions

**BLANK PAGE**

**BLANK PAGE**

**BLANK PAGE**

---

Permission to reproduce items where third-party owned material protected by copyright is included has been sought and cleared where possible. Every reasonable effort has been made by the publisher (UCLES) to trace copyright holders, but if any items requiring clearance have unwittingly been included, the publisher will be pleased to make amends at the earliest possible opportunity.

To avoid the issue of disclosure of answer-related information to candidates, all copyright acknowledgements are reproduced online in the Cambridge International Examinations Copyright Acknowledgements Booklet. This is produced for each series of examinations and is freely available to download at [www.cie.org.uk](http://www.cie.org.uk) after the live examination series.

Cambridge International Examinations is part of the Cambridge Assessment Group. Cambridge Assessment is the brand name of University of Cambridge Local Examinations Syndicate (UCLES), which is itself a department of the University of Cambridge.